



ECONOMIC INDICATORS

NEW SOUTH WALES

EMBARGO: 11:30AM (CANBERRA TIME) MON 15 OCT 2001

C O N T E N T S

	<i>Page</i>
Notes	2
NSW overview	3
Main features	4
List of tables and graphs	5
Population	6
Labour	7
Production	10
Building	11
Retail trade	12
New motor vehicle registrations	13
Tourism	14
Consumer and producer price indexes	15
Finance	16
State Government finance	17
Investment	18
International trade	19

- For further information about these and related statistics, contact Jill Tomlinson on Sydney 02 9268 4123, or the National Information and Referral Service on 1300 135 070.

NOTES

FORTHCOMING ISSUES

ISSUE ISSUE DATE

November 2001 15 November 2001
 December 2001 18 December 2001

DATA NOTES

ABS statistical series are being impacted to varying degrees as a result of The New Tax System (TNTS), introduced in Australia from 1 July 2000. TNTS included the removal of Wholesale Sales Tax and the introduction of a Goods and Services Tax (GST), and as a result, a wide range of ABS data series will reflect significant immediate and subsequent impacts. For further information see *Australian Economic Indicators, July 2000* (Cat. no. 1350.0).

GENERAL

This publication provides information on a wide range of economic indicators which are the latest available at the time of publication. In a number of cases, figures appearing in this summary are preliminary and are subject to revision in subsequent issues.

SEASONAL ADJUSTMENT AND TREND ESTIMATION

Seasonal adjustment is a means of removing the estimated effects of normal seasonal variation from a series so that the effects of other variations on that series can be more clearly recognised. This means that movements of seasonally adjusted estimates may not be reliable indicators of trend behaviour. Smoothing seasonally adjusted series produces a measure of the underlying trend by reducing the impact of the irregular component of the series. For an explanation of seasonal adjustment derivation, refer to the publication *Seasonally Adjusted Indicators* (Cat. no. 1308.0).

SYMBOLS AND OTHER USAGES

FOB free on board
 kWh kilowatt hour
 n.a. not available
 n.p. not available for publication but included in totals where applicable
 n.y.a not yet available
 p preliminary
 r figure or series revised since previous issue
 . . not applicable
 _ nil or rounded to zero
 — break in continuity of series (where a line is drawn across a column between two consecutive figures)

Gregory W. Bray
 Regional Director
 New South Wales

NSW OVERVIEW

POPULATION	The estimated resident population of NSW in the March quarter 2001 was 6,516,600 people.
EMPLOYMENT AND UNEMPLOYMENT	Employment in NSW in August 2001 was a seasonally adjusted figure of 3,095,200. The participation rate increased by 0.7 percentage points from the previous month. The national participation rate was 64.0% in August 2001. Unemployment in NSW increased by 2.1% to a seasonally adjusted figure of 195,900 in August 2001. The unemployment rate in NSW was 6.0% while the national unemployment rate was 6.8%.
INDUSTRIAL DISPUTES	In NSW in June 2001 there were 45,700 working days lost due to industrial disputes, an increase of 208.8% on the working days lost in May 2001. Nationally, there were 66,900 working days lost due to industrial disputes in June 2001.
JOB VACANCIES	In NSW there were 27,700 job vacancies in August 2001, a decrease of 36.9% from August 2000. Nationally there were 92,700 job vacancies.
BUILDING APPROVALS	The seasonally adjusted number of dwelling units approved for NSW in July 2001 was 3,313 dwelling units. This was an increase of 66.3% from July 2000. Nationally, there were 13,292 dwelling units approved, an increase of 39.1% from July 2000.
RETAIL	In seasonally adjusted terms, total retail sales for NSW in July 2001 were \$4,678.6m. Nationally, total retail sales were \$13,641.8m.
NEW MOTOR VEHICLE REGISTRATIONS	In August 2001, there were 22,170 new motor vehicle registrations for NSW (seasonally adjusted), an increase of 4.0% on July 2001 but a decrease of 19.2% from August 2000. Nationally, there were 65,241 new motor vehicle registrations.
TOURISM	In New South Wales the room occupancy rate for the June quarter 2001 decreased by 4.0 percentage points to 54.1% compared with the previous June quarter. There was a decrease of 3.8 percentage points compared with the March quarter 2001.
FINANCE	The seasonally adjusted value of housing finance commitments for owner occupation in NSW in July 2001 was \$3,394m, an increase of 56.7% on July 2000. Nationally, there was \$8,038m in housing finance commitments for owner occupation.
INVESTMENT	Total actual private new fixed capital expenditure, current prices (trend) for NSW in the June quarter 2001 was \$3,238m. The national figure was \$9,776m.
IMPORTS AND EXPORTS	In July 2001 there were \$4,351m of imports into NSW, an increase of 0.9% on June 2001 but a decrease of 3.2% from July 2000. The value of exports from NSW was \$1,970m, an increase of 1.4% from June 2001. Nationally, there were \$9,648m of imports and \$10,132m of exports.

MAIN FEATURES

TOURISM

In NSW, the number of room nights occupied in licensed hotels, motels and guest houses and serviced apartments with 15 or more rooms or units in the June quarter 2001 was 3,223,700. This represented a 5.8% fall from the March quarter 2001 and a 3.0% fall compared with the June quarter 2000. Nationally, the number of room nights occupied was 9,872,900, down 3.1% on the previous quarter and down 1.3% on the June quarter 2000. In NSW, the room occupancy rate in the June quarter 2001 was 54.1%, down 3.8 percentage points from the March quarter 2001. The national room occupancy rate was 55.2%.

In the Sydney Tourism Region, the number of room nights occupied in the June quarter 2001 was 1,866,500, down from the 2,037,900 room nights occupied in the March quarter 2001. The room occupancy rate in the Sydney Tourism Region in the June quarter 2001 was 61.0%, a decrease of 6.1 percentage points on both the March quarter 2001 and the June quarter 2000.

In NSW, takings from accommodation were \$388.3m, down 12.1% on the March quarter 2001 but up 3.8% on the June quarter 2000. Nationally, takings from accommodation were down 8.8% on the March quarter 2001 but up 6.9% on the June quarter 2000. In the Sydney Tourism Region, takings for accommodation fell in the June quarter 2001 (down 12.0% to \$267.9m), but still accounted for almost 70% of the total takings for NSW.

HOUSING FINANCE

The seasonally adjusted estimate for the value of housing finance in NSW was \$3,394m in July 2001, an increase of 56.7% from the corresponding period of the previous year. Nationally, the seasonally adjusted value of lending commitments for housing finance was \$8,038m, an increase of 46.6% from July 2000.

In original terms, total lending commitments in NSW in July 2001 increased 2.3% from June 2001 and 61.3% from July 2000. There were increases over the month for commitments for the construction of dwellings (up 4.9% to \$259m), the purchase of established dwellings (up 5.3% to \$2,341m) and for alterations and additions (up 3.2% to \$130m). Between July 2000 and July 2001 there were increases in all categories of lending in NSW, the most significant being for the purchase of newly erected dwellings (up 101.4% to \$143m).

Nationally, total lending commitments (original terms) increased 2.2% from June 2001 and 51.9% from July 2000. There were increases over the month for all categories of lending except refinancing of existing dwellings. Between July 2000 and July 2001 there were significant increases in all categories of lending in Australia, most significantly for the construction of dwellings (up 88.8% to \$1,014m).

LIST OF TABLES AND GRAPHS

page

POPULATION	1	Estimated resident population, NSW	6
LABOUR	2	Labour data, latest time period, NSW and Australia	7
	3	Labour data, time series, NSW	7
	4	Labour force status of the civilian population, NSW	8
	5	Graph: Unemployment rates, NSW and Australia	9
	6	Coal and electricity production, latest time period, NSW and Australia	10
PRODUCTION	7	Coal and electricity production, time series, NSW	10
	8	Building approvals, latest time period, NSW and Australia	11
BUILDING	9	Building approvals, time series, NSW	11
	10	Turnover of retail establishments, latest time period, NSW and Australia	12
RETAIL TRADE	11	Turnover of retail establishments, seasonally adjusted, time series, NSW	12
	12	New motor vehicle registrations, latest time period, NSW and Australia	13
NEW MOTOR VEHICLE REGISTRATIONS	13	New motor vehicle registrations, seasonally adjusted, time series, NSW	13
	14	Accommodation establishments, latest time period, NSW and Australia	14
TOURISM	15	Accommodation establishments, time series, Sydney and NSW	14
	16	Graph: Hotels, motels etc., monthly room occupancy rates, Sydney Tourism Region and NSW	14
	17	Consumer and producer price indexes, latest time period, NSW and Australia	15
CONSUMER AND PRODUCER PRICE INDEXES	18	Consumer and producer price indexes, time series, NSW	15
	19	Graph: Consumer Price Index, Sydney and average of eight capital cities	15
	20	Finance commitments, latest time period, NSW and Australia	16
FINANCE	21	Finance commitments, time series, NSW	16
	22	Government finance, general government sector, monthly operating statement, NSW	17
STATE GOVERNMENT FINANCE	23	Actual private new fixed capital expenditure, latest time period, NSW and Australia	18
INVESTMENT	24	Actual private new fixed capital expenditure, time series, NSW	18
	25	Graph: Actual private new fixed capital expenditure by type of asset, trend estimate, NSW	18
	26	Imports and exports, latest time period, NSW and Australia	19
INTERNATIONAL TRADE	27	Imports and exports, time series, NSW	19

1 ESTIMATED RESIDENT POPULATION—NSW

	Estimated resident population at end of period			Increase during period			Mean estimated resident population for year ended	
	Males	Females	Persons	Natural increase(a)	Net estimated migration(b)	Total increase	30 June	31 December
	'000	'000	'000	'000	'000	'000	'000	'000
1998	3 164.5	3 204.0	6 368.5	39.9	28.1	68.1	r 6 310.6	r 6 343.8
1999 r	3 197.4	3 234.1	6 431.6	40.3	22.7	63.0	6 375.1	6 405.9
2000 r	3 234.9	3 266.7	6 501.7	42.0	28.1	70.1	6 438.7	6 473.4
1999								
June qtr	3 179.2	3 217.5	6 396.7	10.1	5.1	15.2
September qtr r	3 188.3	3 225.5	6 413.8	9.4	7.7	17.1
December qtr r	3 197.4	3 234.1	6 431.6	10.1	7.7	17.8
2000								
March qtr r	3 205.9	3 241.3	6 447.1	11.1	4.5	15.6
June qtr r	3 214.2	3 248.3	6 462.5	10.1	5.2	15.4
September qtr r	3 225.0	3 257.5	6 482.5	9.2	10.8	20.0
December qtr r	3 234.9	3 266.7	6 501.7	11.6	7.6	19.2
2001								
March qtr	3 242.8	3 273.8	6 516.6	9.3	5.6	14.9

(a) Excess of live births over deaths.

(b) Special arrangements were put in place to estimate net overseas migration data for September and December Quarters 2000 and thereby enable production of State and Territory population estimates. These estimates were based on a sample of passenger cards completed by persons arriving in or departing from Australia in the period August through to December 2000 together with other information available to the Department of Immigration and Multicultural Affairs (DIMA). Further information is available in Demography Working paper 2001/1 — Estimating July to December 2000 Net Overseas Migration, available on the ABS website.

Source: Australian Demographic Statistics (Cat. no. 3101.0).

2 LABOUR—NSW AND AUSTRALIA

	Unit	Latest period	New South Wales			Australia		
			Latest figure	Change from prior period	Change from same period prior year	Latest figure	Change from prior period	Change from same period prior year
				%	%	no.	%	%
Employed persons (seasonally adjusted)	'000	August 2001	3 095.2	1.2	0.4	9 213.2	0.8	0.6
Unemployed persons (seasonally adjusted)	'000	August 2001	195.9	2.1	16.3	668.9	-0.8	12.3
Labour force (seasonally adjusted)	'000	August 2001	3 291.1	1.2	1.2	9 882.1	0.7	1.3
Participation rate (seasonally adjusted)	%	August 2001	63.2	1.1	0.3	64.0	0.6	—
Unemployment rate (seasonally adjusted)	%	August 2001	6.0	1.7	15.4	6.8	-1.4	11.5
Industrial disputes — working days lost	'000	June 2001	45.7	208.8	177.0	66.9	107.1	5.9
Job vacancies	'000	August 2001	27.7	-2.5	-36.9	92.7	11.2	-21.6
Average weekly employee earnings — full-time adult ordinary time earnings (seasonally adjusted)	\$	May 2001	873.9	3.9	5.9	826.3	2.2	5.3

Source: *Average Weekly Earnings, States and Australia* (Cat. no. 6302.0); *Industrial Disputes, Australia* (Cat. no. 6321.0); *Job Vacancies, Australia* (Cat. no. 6354.0); *Labour Force, Australia, Preliminary* (Cat. no. 6202.0).

3 LABOUR—NSW

	Seasonally adjusted(a)						
	Employed persons	Unemployed persons	Labour force	Participation rate	Unemployment rate	Industrial disputes (working days lost)	Job vacancies
	'000	'000	'000	%	%	'000	'000
2000							
June	3 043.0	181.7	3 224.7	62.6	5.6	16.5	..
July	3 059.8	167.1	3 226.9	62.6	5.2	7.5	..
August	3 082.1	168.4	3 250.5	63.0	5.2	8.8	43.9
September	3 060.6	169.6	r 3 230.2	62.5	5.3	8.3	..
October	3 046.2	168.8	3 215.0	62.2	5.3	5.3	..
November	3 028.3	176.5	3 204.8	62.0	5.5	9.2	40.4
December	3 033.4	184.2	3 217.6	62.2	5.7	4.4	..
2001							
January	3 035.3	179.5	r 3 214.8	62.1	5.6	5.8	..
February	3 032.1	190.8	3 222.9	62.2	5.9	8.6	32.0
March	3 035.7	174.9	3 210.6	61.9	5.4	8.2	..
April	3 070.1	187.3	3 257.4	62.8	5.7	r 17.7	..
May	3 064.7	189.4	3 254.1	62.6	5.8	r 14.8	28.4
June	3 060.4	200.6	3 261.0	62.7	6.2	45.7	..
July	3 059.1	191.9	3 251.0	62.5	5.9	n.y.a.	..
August	3 095.2	195.9	3 291.1	63.2	6.0	n.y.a.	27.7

(a) Seasonally adjusted estimates have been revised from February 1978 to reflect the annual reanalysis of seasonal factors which occurs in February each year. For further information please see the feature article in the February 2001 edition of *Labour Force, Australia* (Cat. no. 6203.0).

Source: *Industrial Disputes, Australia* (Cat. no. 6321.0); *Job Vacancies, Australia* (Cat. no. 6354.0); *Labour Force, Australia, Preliminary* (Cat. no. 6202.0).

4 LABOUR FORCE STATUS, NSW—ORIGINAL

	<i>Employed</i>		<i>Unemployed</i>		<i>Labour force</i>	<i>Not in labour force</i>	<i>Civilian population aged 15 years and over</i>	<i>Unemployment rate(a)</i>	<i>Participation rate(b)</i>
	<i>Full-time workers</i>	<i>Total</i>	<i>Looking for full-time work</i>	<i>Total</i>					
	'000	'000	'000	'000					
MALES									
August									
1998	1 424.7	1 600.8	114.4	132.2	1 733.0	729.4	2 462.4	7.6	70.4
1999	1 464.9	1 664.6	94.4	112.6	1 777.1	722.3	2 499.4	6.3	71.1
2000	1 492.9	1 704.6	86.1	97.5	1 802.2	738.4	2 540.5	5.4	70.9
2000									
June	1 518.4	1 720.1	84.6	98.4	1 818.5	716.2	2 534.7	5.4	71.7
July	1 529.6	1 736.5	78.9	94.2	1 830.7	706.9	2 537.6	5.1	72.1
August	1 492.9	1 704.6	86.1	97.5	1 802.2	738.4	2 540.5	5.4	70.9
September	1 519.5	1 742.4	85.2	101.2	1 843.6	699.9	2 543.5	5.5	72.5
October	1 507.8	1 724.6	82.9	95.9	1 820.5	725.0	2 545.5	5.3	71.5
November	1 489.4	1 701.9	87.6	102.4	1 804.3	743.2	2 547.4	5.7	70.8
December	1 513.6	1 729.5	93.4	110.4	1 839.9	709.5	2 549.4	6.0	72.2
2001									
January	1 475.8	1 685.8	104.5	120.3	1 806.1	745.2	2 551.3	6.7	70.8
February	1 479.1	1 684.9	103.8	124.4	1 809.2	743.9	2 553.2	6.9	70.9
March	1 484.0	1 700.1	90.8	108.5	1 808.5	746.5	2 555.1	6.0	70.8
April	1 480.8	1 714.1	89.1	105.1	1 819.1	738.5	2 557.6	5.8	71.1
May	1 478.0	1 713.1	89.0	107.8	1 820.9	739.3	2 560.1	5.9	71.1
June	1 479.3	1 713.0	91.6	110.0	1 823.1	739.6	2 562.7	6.0	71.1
July	1 484.9	1 732.4	87.4	103.8	1 836.2	729.4	2 565.6	5.7	71.6
August	1 466.3	1 710.7	88.8	103.0	1 813.7	754.7	2 568.4	5.7	70.6
FEMALES									
August									
1998	725.4	1 223.3	61.4	81.9	1 305.2	1 245.9	2 551.1	6.3	51.2
1999	723.8	1 239.1	53.8	84.0	1 323.1	1 261.8	2 584.9	6.3	51.2
2000	787.5	1 334.4	39.7	67.3	1 401.7	1 217.6	2 619.3	4.8	53.5
2000									
June	783.4	1 329.0	39.4	72.4	1 401.4	1 212.6	2 614.0	5.2	53.6
July	812.3	1 346.6	36.0	57.8	1 404.4	1 212.2	2 616.7	4.1	53.7
August	787.5	1 334.4	39.7	67.3	1 401.7	1 217.6	2 619.3	4.8	53.5
September	805.6	1 359.4	42.6	70.6	1 429.9	1 192.1	2 622.0	4.9	54.5
October	785.4	1 336.8	39.4	63.4	1 400.2	1 223.3	2 623.5	4.5	53.4
November	787.6	1 320.8	43.0	67.2	1 388.0	1 236.9	2 624.9	4.8	52.9
December	799.2	1 345.9	53.4	74.3	1 420.2	1 206.2	2 626.4	5.2	54.1
2001									
January	787.5	1 305.9	46.2	69.2	1 375.1	1 252.6	2 627.7	5.0	52.3
February	790.6	1 321.2	59.6	91.0	1 412.1	1 216.9	2 629.0	6.4	53.7
March	800.3	1 331.2	45.7	81.0	1 412.2	1 218.1	2 630.3	5.7	53.7
April	785.7	1 357.1	48.2	81.4	1 438.5	1 193.7	2 632.3	5.7	54.7
May	781.5	1 344.7	50.2	79.1	1 423.8	1 210.4	2 634.2	5.6	54.1
June	792.0	1 353.6	50.3	78.7	1 432.4	1 203.8	2 636.2	5.5	54.3
July	790.7	1 350.9	47.3	70.6	1 421.6	1 217.2	2 638.7	5.0	53.9
August	766.4	1 340.3	59.5	88.3	1 428.6	1 212.7	2 641.3	6.2	54.1

...continued

4 LABOUR FORCE STATUS, NSW—ORIGINAL—continued

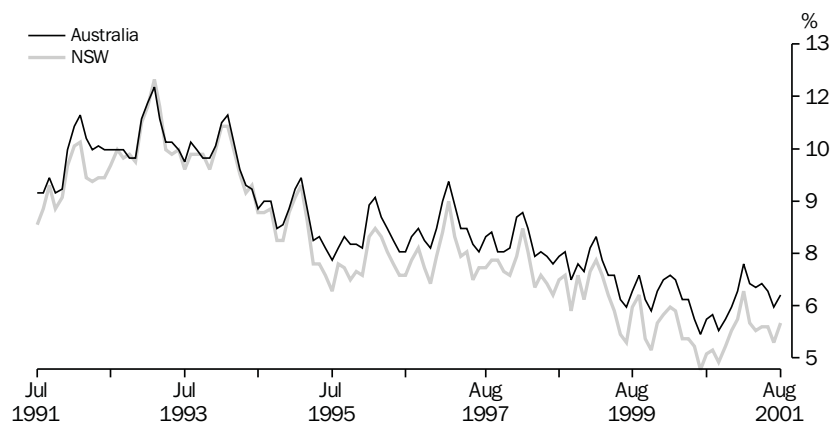
	<u>Employed</u>		<u>Unemployed</u>		<u>Labour force</u>	<u>Not in labour force</u>	<u>Civilian population aged 15 years and over</u>	<u>Unemployment rate(a)</u>	<u>Participation rate(b)</u>
	<u>Full-time workers</u>	<u>Total</u>	<u>Looking for full-time work</u>	<u>Total</u>					
	'000	'000	'000	'000					
PERSONS									
August									
1998	2 150.1	2 824.1	175.8	214.1	3 038.2	1 975.3	5 013.5	7.0	60.6
1999	2 188.7	2 903.7	148.3	196.6	3 100.3	1 984.1	5 084.4	6.3	61.0
2000	2 280.4	3 039.0	125.8	164.9	3 203.9	1 956.0	5 159.9	5.1	62.1
2000									
June	2 301.7	3 049.1	124.0	170.8	3 219.9	1 928.7	5 148.6	5.3	62.5
July	2 341.9	3 083.1	114.9	152.0	3 235.1	1 919.1	5 154.3	4.7	62.8
August	2 280.4	3 039.0	125.8	164.9	3 203.9	1 956.0	5 159.9	5.1	62.1
September	2 325.2	3 101.7	127.8	171.8	3 273.5	1 892.0	5 165.5	5.2	63.4
October	2 293.3	3 061.4	122.3	159.3	3 220.7	1 948.3	5 169.0	4.9	62.3
November	2 277.0	3 022.7	130.5	169.6	3 192.3	1 980.1	5 172.4	5.3	61.7
December	2 312.8	3 075.4	146.8	184.7	3 260.1	1 915.7	5 175.8	5.7	63.0
2001									
January	2 263.4	2 991.7	150.8	189.4	3 181.2	1 997.8	5 179.0	6.0	61.4
February	2 269.7	3 006.0	163.4	215.3	3 221.4	1 960.8	5 182.2	6.7	62.2
March	2 284.3	3 031.3	136.5	189.5	3 220.8	1 964.6	5 185.4	5.9	62.1
April	2 266.5	3 071.2	137.2	186.5	3 257.7	1 932.2	5 189.9	5.7	62.8
May	2 259.4	3 057.7	139.2	186.9	3 244.7	1 949.7	5 194.4	5.8	62.5
June	2 271.3	3 066.7	142.0	188.8	3 255.4	1 943.4	5 198.9	5.8	62.6
July	2 275.6	3 083.3	134.7	174.4	3 257.7	1 946.6	5 204.3	5.4	62.6
August	2 232.6	3 051.0	148.3	191.3	3 242.3	1 967.4	5 209.7	5.9	62.2

(a) The number of unemployed in each group expressed as a percentage of the labour force in the same group.

(b) The labour force in each group expressed as a percentage of the civilian population aged 15 years and over in the same group.

Source: Labour Force, Australia, Preliminary (Cat. no. 6202.0).

5 UNEMPLOYMENT RATE—ORIGINAL



Source: Labour Force, Australia, Preliminary (Cat. no. 6202.0)

6 COAL AND ELECTRICITY PRODUCTION, NSW AND AUSTRALIA—ORIGINAL

	Unit	Latest period	Latest figure	New South Wales		Australia		
				Change from prior period	Change from same period prior year	Change from prior period	Change from same period prior year	
				%	%	Latest figure	%	%
Raw coal won								
Underground	'000 tonnes	June 2001	4 676	-13.0	21.5	8 380	-10.5	13.7
Open cut	'000 tonnes	June 2001	6 768	-21.5	5.6	19 719	-11.0	11.0
Total	'000 tonnes	June 2001	11 444	-18.2	11.6	28 099	-10.8	11.8
Electricity	mill. kWh	June qtr 2001	16 642	—	-4.0	46 317	-1.2	-2.2

Source: Joint Coal Board for NSW and Australia from ABS unpublished statistics, Manufacturing Production, Australia (Cat. no. 8301.0).

7 COAL AND ELECTRICITY PRODUCTION, NSW—ORIGINAL

	Raw coal won			Electricity mill. kWh
	Underground	Open cut	Total	
	'000 tonnes	'000 tonnes	'000 tonnes	
1998–1999 r	51 318	80 063	131 382	63 743
1999–2000 r	52 763	80 133	132 896	65 934
2000–2001	53 414	86 012	139 427	69 324
1999				
December r	5 018	6 967	11 985	—
2000				
April	3 855	5 084	8 939	—
May r	5 601	8 591	14 192	17 334
June r	3 847	6 410	10 257	—
July r	4 102	6 515	10 617	—
August r	5 613	8 269	13 883	19 289
September r	3 836	7 198	11 034	—
October r	4 552	6 976	11 528	—
November r	5 708	8 014	13 722	16 749
December	3 166	6 253	9 419	—
2001				
January r	3 316	6 395	9 712	—
February r	4 241	5 999	10 240	16 644
March r	5 469	7 763	13 232	—
April r	3 361	7 240	10 601	—
May r	5 373	8 622	13 994	16 642
June	4 676	6 768	11 444	—

Source: Joint Coal Board, Manufacturing Production, Australia (Cat. no. 8301.0).

8 BUILDING APPROVALS—NSW AND AUSTRALIA

	Unit	Latest period	Latest figure	New South Wales		Australia		
				Change from prior period %	Change from same period prior year %	Latest figure	Change from prior period %	Change from same period prior year %
Number of dwelling units(a) (seasonally adjusted (b))								
New houses	no.	July 2001	2 121	2.0	54.7	10 087	12.3	63.4
Total	no.	July 2001	3 313	0.8	66.3	13 292	6.3	39.1
Value of new residential building (seasonally adjusted)	\$m	July 2001	555.9	3.9	94.8	1 844.1	7.5	50.9
Value of alterations and additions to residential building(c) (seasonally adjusted)	\$m	July 2001	104.5	-1.7	39.0	297.2	-3.3	13.1
Value of non-residential building(d) (original)	\$m	July 2001	480.3	86.4	67.1	1 124.1	22.2	-6.5
Value of all building (original)	\$m	July 2001	1 186.5	39.6	77.4	3 260.2	14.8	22.9

(a) Includes dwelling units approved as part of the construction of non-residential building and alterations and additions to existing buildings (including conversions to dwelling units).

(b) Seasonally adjusted and trend estimates to November 2000 have been revised. See Building Approvals, Australia (Cat. no. 8731.0).

(c) Valued at \$10,000 or more. Includes conversions of existing buildings into residential buildings.

(d) Valued at \$50,000 or more.

Source: Building Approvals, Australia (Cat. no. 8731.0).

9 BUILDING APPROVALS—NSW

	Number of dwelling units(a), seasonally adjusted				Value of building approvals(b)			
	New houses		Total		Seasonally adjusted		Original	
	Private sector	Total	Private sector	Total	New residential building	Alterations and additions to residential building(c)	Non-residential building(d)	All building
	no.	no.	no.	no.	\$m	\$m	\$m	\$m
1998-1999	4 558.3	12 032.3
1999-2000	4 511.3	12 684.7
2000-2001 r	3 638.0	9 614.0
2000								
May	2 052	2 068	3 873	3 956	541.2	121.0	312.0	1 101.7
June	1 891	1 899	3 202	3 326	452.6	87.0	350.5	865.3
July	1 363	1 371	1 904	1 992	285.3	75.2	287.4	668.8
August	1 543	1 553	2 459	2 529	383.4	83.7	280.4	770.5
September	1 492	1 500	2 805	2 892	409.2	84.6	309.8	765.9
October	1 753	1 762	3 563	3 606	473.6	120.4	381.2	942.6
November	1 530	1 540	2 913	2 994	409.2	87.1	270.1	858.3
December	1 466	1 477	2 819	2 918	384.4	140.2	208.9	693.6
2001								
January r	1 548	1 556	2 864	2 910	414.0	84.7	553.1	1 008.5
February	1 573	1 579	2 448	2 614	348.0	r 86.6	r 391.3	r 812.9
March	1 455	1 466	2 636	2 714	376.7	r 93.2	r 210.3	r 660.9
April r	1 542	1 549	2 604	2 721	383.9	89.0	217.2	669.0
May r	1 741	1 752	3 104	3 212	461.5	98.3	270.6	912.8
June r	2 075	2 079	3 268	3 288	534.9	106.3	257.7	850.2
July	2 116	2 121	3 286	3 313	555.9	104.5	480.3	1 186.5

(a) Includes dwelling units approved as part of the construction of non-residential building and alterations and additions to existing buildings (including conversions to dwelling units).

(b) From July 2000, value data for both residential and non-residential building approvals will be on a GST inclusive basis.

(c) Valued at \$10,000 or more. Includes conversions of existing buildings into residential buildings.

(d) Valued at \$50,000 or more.

Source: Building Approvals, Australia (Cat. no. 8731.0).

10 TURNOVER OF RETAIL ESTABLISHMENTS(a), NSW AND AUSTRALIA(b)—SEASONALLY ADJUSTED

	Latest period	New South Wales			Australia		
		Latest figure	Change from prior period	Change from same period prior year	Latest figure	Change from prior period	Change from same period prior year
			\$m	%		%	\$m
Food retailing	July 2001	1 743.9	1.1	8.7	5 395.2	0.7	7.9
Department stores	July 2001	394.1	2.1	31.8	1 139.1	1.2	30.0
Clothing and soft good retailing	July 2001	315.0	-4.2	12.7	861.3	-2.0	21.0
Household good retailing	July 2001	488.7	-3.7	14.3	1 622.2	-0.7	16.9
Recreational good retailing	July 2001	211.1	-0.8	-3.2	627.2	1.1	3.9
Other retailing	July 2001	495.6	0.9	24.9	1 529.1	1.2	20.8
Hospitality and services	July 2001	1 030.2	4.5	11.6	2 467.7	3.8	14.3
Total value of retail sales	July 2001	4 678.6	0.9	12.8	13 641.8	1.0	13.6

(a) The figures shown are derived from a monthly survey of retail establishments. Excludes motor vehicle, boat and caravan dealers, service stations, smash repairers, tyre and battery retailers, bread and milk vendors, footwear repairers and electrical appliance repairers n.e.c. Retail establishments which do not have employees are excluded from the survey. Turnover includes retail sales, wholesale sales, takings from repairs, meals and hiring of goods; and commissions from agency activity (e.g. commissions received from collecting dry cleaning, selling lottery tickets etc.).

(b) Data from July 2000 reference month onwards are recorded inclusive of GST.

Source: Retail Trade, Australia (Cat. no. 8501.0).

11 TURNOVER OF RETAIL ESTABLISHMENTS(a), NSW(b)—SEASONALLY ADJUSTED(c)

	Food retailing	Department stores	Clothing and soft good retailing	Household good retailing	Recreational good retailing	Other retailing	Hospitality and services	Total
	\$m	\$m	\$m	\$m	\$m	\$m	\$m	\$m
2000								
April r	1 552.4	378.4	299.8	443.1	201.2	425.9	874.5	4 175.3
May r	1 554.5	382.0	313.1	465.0	215.9	436.7	873.4	4 240.6
June r	1 580.1	463.7	374.4	574.4	201.7	476.4	894.7	4 565.4
July r	1 604.6	299.1	279.6	427.6	218.0	396.8	922.8	4 148.6
August r	1 636.3	397.8	299.4	476.1	214.2	425.3	989.4	4 438.4
September r	1 649.2	393.3	366.2	465.3	205.7	462.2	1 058.6	4 600.5
October r	1 629.6	386.0	307.8	471.8	214.3	453.7	983.5	4 446.6
November r	1 611.6	375.1	304.7	484.3	213.1	439.7	954.7	4 383.2
December r	1 643.9	393.5	312.3	485.9	208.7	450.3	936.4	4 431.0
2001								
January r	1 667.5	387.5	304.0	494.2	227.7	455.5	986.2	4 522.6
February r	1 678.5	391.2	298.2	480.8	241.4	472.5	998.1	4 560.6
March r	1 685.4	387.2	321.6	489.3	233.8	470.9	1 004.4	4 592.6
April r	1 719.5	387.7	331.7	483.4	217.6	482.6	986.9	4 609.5
May r	1 706.8	388.7	332.6	480.7	207.5	489.4	994.8	4 600.5
June r	1 724.8	385.9	328.9	507.3	212.9	491.4	985.5	4 636.8
July	1 743.9	394.1	315.0	488.7	211.1	495.6	1 030.2	4 678.6

(a) The figures shown are derived from a monthly survey of retail establishments. Excludes motor vehicle, boat and caravan dealers, service stations, smash repairers, tyre and battery retailers, bread and milk vendors, footwear repairers and electrical appliance repairers n.e.c. Retail establishments which do not have employees are excluded from the survey. Turnover includes retail sales, wholesale sales, takings from repairs, meals and hiring of goods; and commissions from agency activity (e.g. commissions received from collecting dry cleaning, selling lottery tickets etc.).

(b) Data from July 2000 reference month onwards are recorded inclusive of GST.

(c) Data for previous months have been revised due to concurrent seasonal adjustment methodology. See Explanatory Notes in Retail Trade, Australia (Cat. no. 8501.0).

Source: Retail Trade, Australia (Cat. no. 8501.0).

12 NEW MOTOR VEHICLE REGISTRATIONS(a), NSW AND AUSTRALIA—SEASONALLY ADJUSTED(b)

	Latest period	New South Wales			Australia		
		Latest figure	Change from prior period	Change from same period prior year	Latest figure	Change from prior period	Change from same period prior year
		no.	%	%	no.	%	%
Passenger vehicles	August 2001	18 560	3.7	-22.0	54 177	-3.2	-15.2
Other vehicles (excluding motor cycles)	August 2001	3 610	5.1	-0.2	11 064	2.2	4.7
Total registrations (excluding motor cycles)	August 2001	22 170	4.0	-19.2	65 241	-2.3	-12.4

(a) Includes vehicles (other than those of the defence forces) owned by Government departments and authorities. Excludes mobile plant and equipment, tractors, trailers and non-motorised caravans.

(b) The changes to the seasonally adjusted series result from the annual re-estimation of seasonal factors.

Source: *New Motor Vehicle Registrations, Australia, Preliminary (Cat. no. 9301.0)*.

13 NEW MOTOR VEHICLE REGISTRATIONS(a), NSW—SEASONALLY ADJUSTED(b)

	Passenger vehicles	Other vehicles (excluding motor cycles)	Total (excluding motor cycles)
	no.	no.	no.
2000			
June	13 466	3 651	17 117
July	23 670	3 066	26 736
August	23 809	3 616	27 425
September	19 247	3 387	22 634
October	18 823	3 328	22 151
November	19 611	3 063	22 673
December	21 804	3 430	25 234
2001			
January	18 585	3 529	22 114
February	17 706	3 290	20 996
March	18 293	3 108	21 401
April	18 160	3 086	21 246
May	17 989	2 949	20 938
June	16 425	3 024	19 449
July r	17 890	3 436	21 326
August	18 560	3 610	22 170

(a) Includes vehicles (other than those of the defence forces) owned by Government departments and authorities. Excludes mobile plant and equipment, tractors, trailers and non-motorised caravans.

(b) The changes to the seasonally adjusted series result from the annual re-estimation of seasonal factors.

Source: *New Motor Vehicle Registrations, Australia, Preliminary (Cat. no.9301.0)*.

14 ACCOMMODATION ESTABLISHMENTS(a) NSW AND AUSTRALIA—ORIGINAL

	Unit	Latest period	New South Wales				Australia	
			Latest figure	Change from prior period	Change from same period prior year	Latest figure	Change from prior period	Change from same period prior year
				%	%		%	%
Room nights	'000	June qtr 2001	3 223.7	-5.8	-3.0	9 872.9	-3.1	-1.3
Room occupancy rate	%	June qtr 2001	54.1	-6.6	-6.9	55.2	-4.3	-3.3
Takings(b)	\$'000	June qtr 2001	388 268	-12.1	3.8	1 111 337	-8.8	6.9

(a) Licensed hotels with facilities, motels and guest houses and serviced apartments with 15 or more rooms or units.

(b) Includes GST.

Source: Tourist Accommodation, Australia (Cat. no. 8635.0).

15 ACCOMMODATION ESTABLISHMENTS(a) SYDNEY AND NSW—ORIGINAL

	Sydney Tourism Region(b)			New South Wales		
	Room nights	Room occupancy rate	Takings(c)	Room nights	Room occupancy rate	Takings
	'000	%	\$'000	'000	%	\$'000
2000						
March qtr	1 980.0	71.7	279 374	3 388.1	60.3	397 869
June qtr	1 902.6	67.1	258 225	r 3 323.9	58.1	374 005
September qtr	2 093.6	69.6	412 378	3 543.3	59.7	r 566 316
December qtr	2 096.0	68.8	334 433	3 498.0	58.7	r 470 017
2001						
March qtr	2 037.9	67.1	304 602	3 421.1	57.9	r 441 871
June qtr	1 866.5	61.0	267 939	3 223.7	54.1	388 268

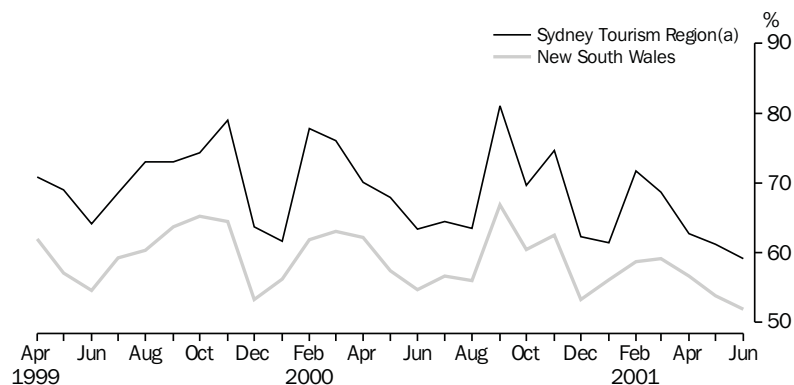
(a) Licensed hotels with facilities, motels and guest houses and serviced apartments with 15 or more rooms or units.

(b) Excludes Gosford, Wyong and Blue Mountains Statistical Local Areas.

(c) Takings after 1 July 2000 are on a GST inclusive basis.

Source: Tourist Accommodation, Small Area Data, New South Wales (Cat. no. 8635.1.40.001).

16 ACCOMMODATION ESTABLISHMENTS, MONTHLY ROOM OCCUPANCY RATE—ORIGINAL



(a) Excludes Gosford, Wyong and Blue Mountains Statistical Local Areas.

Source: Tourist Accommodation, Small Area Data, NSW (Prod. no. 8635.1.40.001).

17 CONSUMER AND PRODUCER PRICE INDEXES—NSW AND AUSTRALIA

	Unit	Latest period	Latest figure	New South Wales(a)		Australia(b)		
				Change from prior period	Change from same period prior year	Change from prior period	Change from same period prior year	
				%	%	Latest figure	%	%
Consumer Price Index (all groups)	1989-90 = 100.0	June qtr 2001	135.0	0.7	6.3	133.8	0.8	6.0
Price index of materials used in house building (all groups)	1989-90 = 100.0	June qtr 2001	130.2	0.3	-0.8	124.4	0.2	-0.9
Price index of materials used in building other than house building (all groups)	1989-90 = 100.0	June qtr 2001	116.7	0.3	-0.5	117.2	0.4	-0.2

(a) Refers to State capital city — Sydney.

(b) For the Consumer Price Index this is the weighted average of eight capital cities and for the other two indexes, the weighted average of the six State capital cities.

Source: Consumer Price Index, Australia (Cat. no. 6401.0); Producer Price Indexes, Australia (Cat. no. 6427.0).

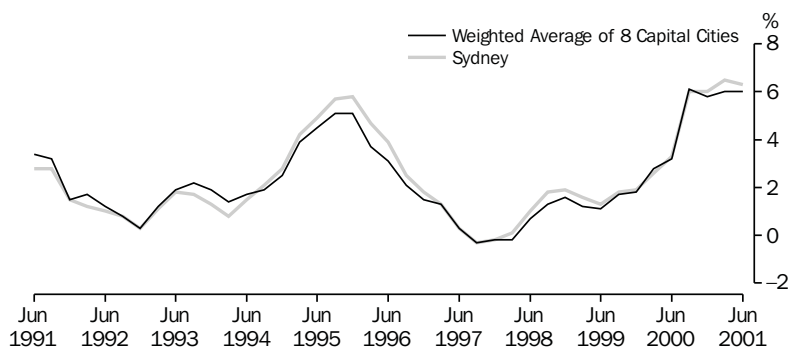
18 CONSUMER AND PRODUCER PRICE INDEXES—NSW(a)

	Consumer Price Index, all groups	Price Index of materials used in house building, all groups	Price Index of materials used in building other than house building, all groups
	1989-90 = 100.0	1989-90 = 100.0	1989-90 = 100.0
2000			
March qtr	125.8	128.0	116.4
June qtr	127.0	131.2	117.3
September qtr	131.6	130.0	115.4
December qtr	132.2	129.8	115.7
2001			
March qtr	134.0	129.8	116.4
June qtr	135.0	130.2	116.7

(a) Refers to State capital city — Sydney.

Source: Consumer Price Index, Australia (Cat. no. 6401.0); Producer Price Indexes, Australia (Cat. no. 6427.0).

19 CONSUMER PRICE INDEX, ANNUAL RATE OF CHANGE



Source: Consumer Price Index (Cat. no. 6401.0).

20 SECURED HOUSING FINANCE COMMITMENTS TO INDIVIDUALS FOR OWNER OCCUPATION—NSW AND AUSTRALIA

	Latest period	New South Wales			Australia		
		Latest figure \$m	Change from prior period	Change from same period prior year	Latest figure \$m	Change from prior period	Change from same period prior year
			%	%		%	%
Lending commitments for the construction or purchase of dwellings—							
Construction of dwellings	July 2001	259	4.9	52.4	1 014	9.7	88.8
Purchase of newly erected dwellings	July 2001	143	-6.5	101.4	324	2.9	72.3
Purchase of established dwellings(a)	July 2001	2 341	5.3	63.0	5 128	2.8	46.4
Refinancing of existing dwellings	July 2001	691	-5.7	53.2	1 537	-4.2	47.8
Lending commitments for alterations and additions	July 2001	130	3.2	46.1	329	0.3	45.6
Total lending commitments to individuals for housing(b)	July 2001	3 435	2.3	61.3	8 003	2.2	51.9
Total lending commitments to individuals for housing (seasonally adjusted)(b)	July 2001	3 394	6.0	56.7	8 038	2.7	46.6

(a) Excludes refinancing.

(b) Excludes alterations and additions.

Source: *Housing Finance for Owner Occupation, Australia (Cat. no. 5609.0)*.

21 SECURED HOUSING FINANCE COMMITMENTS TO INDIVIDUALS FOR OWNER OCCUPATION—NSW

	Lending commitments for the construction or purchase of dwellings					Total lending commitments to individuals for housing(b)	
	Construction of dwellings	Purchase of newly erected dwellings	Purchase of established dwellings(a)	Refinancing of existing dwellings	Lending commitments for alterations and additions	Original	Seasonally adjusted
	\$m	\$m	\$m	\$m	\$m	\$m	\$m
1998-1999	2 990	1 147	16 761	4 026	1 126	24 925	..
1999-2000	3 268	1 129	21 636	4 993	1 271	31 026	..
2000-2001 r	2 074	1 171	21 259	6 464	1 155	30 969	..
2000							
May	246	94	1 909	524	119	2 772	2 402
June	197	86	1 629	474	105	2 386	2 232
July	170	71	1 436	451	89	2 129	2 166
August	166	88	1 710	480	91	2 444	2 336
September	152	83	1 467	418	84	2 120	2 165
October	151	65	1 397	492	90	2 105	2 123
November	160	82	1 757	542	85	2 542	2 357
December	143	88	1 688	483	80	2 402	2 690
2001							
January	121	97	1 497	426	79	2 141	2 644
February	151	88	1 630	455	96	2 323	2 464
March	189	120	2 098	622	111	3 029	2 801
April	180	101	1 950	580	103	2 811	2 902
May	246	134	2 405	782	123	3 567	3 147
June r	247	153	2 223	733	126	3 357	3 202
July	259	143	2 341	691	130	3 435	3 394

(a) Excludes refinancing.

(b) Excludes alterations and additions.

Source: *Housing Finance for Owner Occupation, Australia (Cat. no. 5609.0)*.

22 NSW GOVERNMENT FINANCE, GENERAL GOVERNMENT SECTOR(a)

	Budget 12 months to 30/06/2001 \$m	Actual 11 months to 31/05/2001 \$m
State revenues		
Taxation	12 412	11 804
Commonwealth grants	12 780	11 777
Capital Repatriations	2 400	3 203
Financial Distributions	1 210	1 123
Fines, regulatory fees and other	792	838
<i>Total state revenues</i>	29 594	28 745
Operating revenues		
Sale of goods and services	2 171	2 092
Investment income	391	426
Grants and contributions	421	478
Other revenue	298	266
<i>Total operating revenues</i>	3 281	3 262
Expenses		
Employee Related — super valuations	—	1 182
Employee Related — super other	1 540	1 507
Employee related — other	12 157	11 238
Other operating	6 765	6 344
Maintenance	1 120	992
Depreciation and amortisation	995	1 316
Recurrent grants and subsidies	4 060	4 535
Capital grants and subsidies	1 252	1 002
Finance valuations	278	711
Finance other	1 009	903
<i>Total expenses</i>	29 176	29 730
Gain/(loss) on sale of non-current assets	-14	1
Net cost of services	25 909	26 467
Operating Surplus	3 685	2 278
less valuation gains	-1 888	- 848
less capital acquisitions	-2 540	-1 980
plus depreciation	995	1 316
plus asset sales & other	407	115
Budget Surplus	659	881

(a) The format for reporting NSW Government Finance Statistics has been amended to ensure consistency with the reporting framework used in the 2001–02 Budget Papers. Changes include the end of separate reporting of abnormal items and the consequent need to create a new revenue category (Capital Repatriations) and two new expense categories (Superannuation Valuations and Finance Valuations). Additionally there have been some minor reclassification between expenses and capital expenditure. However, the budgeted Surplus is unchanged from that reported in the 2000–01 Budget Papers.

Source: Financial Statement released by NSW Treasury. Figures may differ from data published in annual ABS publications.

23 ACTUAL PRIVATE NEW FIXED CAPITAL EXPENDITURE, CURRENT PRICES, NSW AND AUSTRALIA—TREND

Type of asset	Latest period	New South Wales			Australia		
		Latest figure	Change from prior period	Change from same period prior year	Latest figure	Change from prior period	Change from same period prior year
			\$m	%		%	\$m
New buildings and structures	June qtr 2001	705	0.6	-26.3	2 463	5.5	-12.4
Equipment, plant and machinery	June qtr 2001	2 533	-4.8	-14.0	7 313	-1.0	-2.8
Total	June qtr 2001	3 238	-3.7	-17.0	9 776	0.6	-5.4

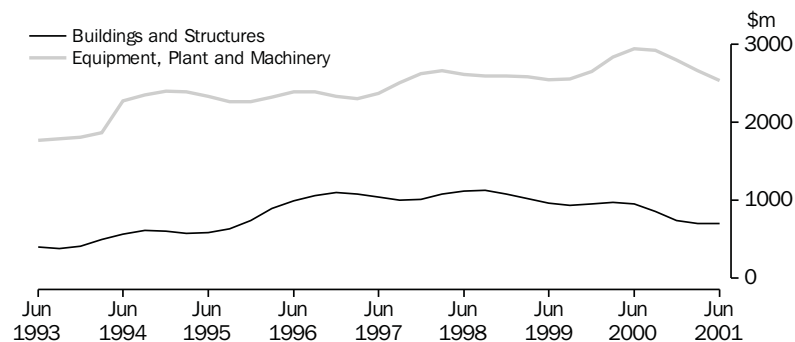
Source: State Estimates of Private New Capital Expenditure (Cat. no. 5646.0).

24 ACTUAL PRIVATE NEW FIXED CAPITAL EXPENDITURE, CURRENT PRICES—NSW, TREND

	Type of asset			Total
	New buildings and structures	Equipment, plant and machinery		
	\$m	\$m	\$m	
2000				
March qtr r	971	2 839	3 810	
June qtr r	957	2 946	3 903	
September qtr r	861	2 927	3 788	
December qtr r	745	2 800	3 545	
2001				
March qtr r	701	2 661	3 362	
June qtr	705	2 533	3 238	

Source: State Estimates of Private New Capital Expenditure (Cat. no. 5646.0).

25 ACTUAL PRIVATE NEW FIXED CAPITAL EXPENDITURE, CURRENT PRICES, NSW—TREND



Source: State Estimates of New Capital Expenditure (Cat. no. 5646.0).

26 INTERNATIONAL TRADE, IMPORTS(a) AND EXPORTS(b)—NSW AND AUSTRALIA(c)

	Latest period	New South Wales			Australia		
		Latest figure	Change from prior period	Change from same period prior year	Latest figure	Change from prior period	Change from same period prior year
		\$m	%	%	\$m	%	%
Overseas imports into NSW	July 2001	4 351	0.9	-3.2	9 648	1.8	-1.1
Total overseas exports(d)	July 2001	1 970	1.4	10.7	10 132	1.0	14.4
Export commodities and SITC(e) code							
Meat and meat preparations (01)	July 2001	140	-2.5	39.4	538	-10.5	21.1
Cereals and cereal preparations (04)	July 2001	96	36.2	-30.5	406	11.9	1.5
Wool and other animal hair (268)	July 2001	66	-12.5	0.5	263	-6.2	3.1
Coal, coke and briquettes (32)	July 2001	441	30.8	38.9	1 107	1.8	27.5
Iron and steel (67)	July 2001	13	-19.3	-79.9	55	-10.1	-46.6
Aluminium (684)	July 2001	147	11.4	13.6	420	9.9	27.3
Office machines and automatic data processing machines (75)	July 2001	28	-7.2	-7.3	51	-8.0	9.7

(a) Figures shown are Customs value.

(b) Restrictions are placed on the release of statistics for certain commodities for reasons of confidentiality. The restrictions do not affect total export and import figures, but they can affect figures at State and commodity levels. More information on the treatment of confidential data in international merchandise trade statistics can be obtained from the Information Paper, International Merchandise Trade Statistics, Australia: Data Confidentiality (Cat. no. 5487.0), or the International Trade Confidentiality Manager on 02 6252 5409. Figures shown are Free On Board (FOB) values.

(c) All percentages are calculated using unrounded figures.

(d) Excludes re-exported goods.

(e) Standard International Trade Classification Revision 3.

Source: ABS data available on request, International Trade database.

27 INTERNATIONAL TRADE, IMPORTS(a) AND EXPORTS(b)—NSW

	Overseas exports of SITC(c) commodities								
	Overseas imports into NSW	Total overseas exports(d)	Meat and meat preparations (01)	Cereals and cereal preparations (04)	Wool and other animal hair (268)	Coal, coke and briquettes (32)	Iron and steel (67)	Aluminium (684)	Office machines and automatic data processing machines (75)
	\$m	\$m	\$m	\$m	\$m	\$m	\$m	\$m	\$m
1999-2000	47 927	18 966	1 047	1 270	826	3 092	831	1 341	379
2000-2001 r	52 505	22 749	1 387	1 517	1 051	3 834	247	1 636	362
2000									
May	4 580	1 771	93	118	69	295	109	122	30
June	4 866	1 768	93	112	66	268	94	129	29
July	4 493	1 779	101	138	66	318	64	129	31
August	4 947	1 826	99	143	66	301	67	135	27
September	4 472	1 843	89	149	78	292	10	134	30
October	5 071	2 042	120	160	114	337	10	148	37
November	4 936	1 973	118	139	112	283	11	149	26
December	4 243	2 017	105	118	103	309	12	129	36
2001									
January	3 881	1 565	94	87	63	313	9	125	19
February	3 493	r 1 707	116	116	84	262	10	125	27
March	4 321	r 2 056	132	118	123	327	12	160	35
April	4 116	r 2 001	r 129	125	r 84	404	14	137	r 33
May	4 220	r 1 996	140	152	r 82	350	12	r 133	32
June r	4 311	1 944	144	71	76	337	16	132	31
July	4 351	1 970	140	96	66	441	13	147	28

(a) Figures shown are Customs value.

(b) Restrictions are placed on the release of statistics for certain commodities for reasons of confidentiality. The restrictions do not affect total export and import figures, but they can affect figures at State and commodity levels. More information on the treatment of confidential data in international merchandise trade statistics can be obtained from the Information Paper, International Merchandise Trade Statistics, Australia: Data Confidentiality (Cat. no. 5487.0), or the International Trade Confidentiality Manager on 02 6252 5409. Figures shown are Free On Board (FOB) values.

(c) Standard International Trade Classification Revision 3.

(d) Excludes re-exported goods.

Source: ABS data available on request, International Trade database.

FOR MORE INFORMATION...

- INTERNET* **www.abs.gov.au** the ABS web site is the best place to start for access to summary data from our latest publications, information about the ABS, advice about upcoming releases, our catalogue, and Australia Now—a statistical profile.
- LIBRARY* A range of ABS publications is available from public and tertiary libraries Australia-wide. Contact your nearest library to determine whether it has the ABS statistics you require, or visit our web site for a list of libraries.
- CPI INFOLINE* For current and historical Consumer Price Index data, call 1902 981 074 (call cost 77c per minute).
- DIAL-A-STATISTIC* For the latest figures for National Accounts, Balance of Payments, Labour Force, Average Weekly Earnings, Estimated Resident Population and the Consumer Price Index call 1900 986 400 (call cost 77c per minute).

INFORMATION SERVICE

Data which have been published and can be provided within five minutes are free of charge. Our information consultants can also help you to access the full range of ABS information—ABS user-pays services can be tailored to your needs, time frame and budget. Publications may be purchased. Specialists are on hand to help you with analytical or methodological advice.

- PHONE* **1300 135 070**
- EMAIL* **client.services@abs.gov.au**
- FAX* 1300 135 211
- POST* Client Services, ABS, GPO Box 796, Sydney 1041

WHY NOT SUBSCRIBE?

ABS subscription services provide regular, convenient and prompt deliveries of ABS publications and products as they are released. Email delivery of monthly and quarterly publications is available.

- PHONE* 1300 366 323
- EMAIL* subscriptions@abs.gov.au
- FAX* 03 9615 7848
- POST* Subscription Services, ABS, GPO Box 2796Y, Melbourne 3001



2130710010018
ISSN 1031-8534

RRP \$18.00